

GLASS:
ART. BEAUTY. DESIGN.

Exhibition Object List

On view at Hillwood Estate, Museum & Gardens June 10, 2023 through January 14, 2024.
Unless otherwise noted, objects were bequeathed to Hillwood by Marjorie Post in 1973.

Section 1: Ancient Glass

All items in this section are on loan to Hillwood by local institutions.

Section 2: What Is Glass?



Goblet
Russia, 1800s
Glass, silver
([23.225](#))



Vase
Russia, 1800s
Glass
Gift of Eleanor Close Barzin, 1996 ([23.496.1-2](#))



Pair of candelabras
St. Petersburg, 1790s
Glass, gilt bronze and metal, marble
Gift of Madame Augusto Rosso, 1968 ([14.240.1-2](#))

Section 3: I See You. Do You See Me?



Eye-shaped magnifying glass
Hermès (French, 1837–present)
Paris, mid-1900s
Gilt metal, glass
([14.98](#))



Four slides
Moscow street scene
Two portraits of guests at a Winter Palace ball, St. Petersburg, 1903
View of the Black Sea, Oreanda, Crimea, Ukraine 1900s
Glass



Section 4: Glass in Hillwood's Collection ITALY



Pieces from Marjorie Post's Renaissance revival service
Salviati & Co. (Italian, 1859–present)
Venice, 1920–35
Glass
Gift of Dina Merrill Robertson, 1975 ([23.392-397](#))



Glassware in Venetian style
Attributed to Salviati & Co. (Italian, 1859–present)
Venice, circa 1927
Glass
Bequest of Dina Merrill Hartley, 2018 ([2018.40.2.1-116](#))





CENTRAL EUROPE



Tumbler
Austria, 1820s
Glass, paint, gilding
Gift of Eleanor Close Barzin, 1975 ([23.285](#))



Wine glass
Lobmeyr Glassworks (Austrian, 1823–present)
Austria, 1800s
Glass
Gift of Eleanor Close Barzin, 1975 ([23.284.1](#))



Tazze
Bohemia, 1800s
Glass, gilding
([23.418.1-2](#))



Footed vase, from a pair
Bohemia, 1800s
Glass
([23.419.1-2](#))



Covered bowl
Bohemia, 1900s
Glass
([23.478.1-2](#))



Footed vase, from a pair
1900s
Glass
([23.422.1-2](#))

RUSSIA



Goblet engraved with double-headed eagle and lid
Probably Bohemia, circa 1690
Glass
([23.224.1-2](#))



Goblet with portrait and cipher of Empress Anna Ivanovna (r. 1730–40)
Iamburg Glassworks (Russian, 1704–35)
Russia, 1730–35
Glass
([23.2](#))



Goblet with cipher of Empress Elizabeth (r. 1741–61) and lid
St. Petersburg Glassworks, mid-1700s
Glass
Gift of Madame Augusto Rosso, 1968 ([23.476.1-2](#))



Goblet with cipher and portrait of Empress Catherine II
(r. 1762–96)
Russia, 1762–96
Glass
([23.223](#))



Vase
Imperial Glass Manufactory (Russian, 1777–1917)
St. Petersburg, 1830–40
Glass
([23.39.1-2](#))



Three perfume bottles
Russia, 1840s
Glass
([23.83.1-2](#); gift of Madame Augusto Rosso, 1966, [23.459.1-2](#); [23.85.1-2](#))





Decanter
Russia, 1840s
Glass
([23.84.1-2](#))



Decanter decorated with playing cards
Workshop of Terebenev & Co. (Russian, active 1840s-50s)
St. Petersburg, 1840-50
Glass
([23.80.1-2](#))



Decanter with bird image
Possibly Imperial Glass Manufactory (Russian, 1777-1917)
Russia, 1850-75
Glass
Gift of Madame Augusto Rosso, 1968 ([23.461.1-2](#))



Double-walled beaker
Bakhmetev Glassworks (Russian, 1764-present)
Alexander Petrovich Vershinin, workmaster (Russian, 1765-1828)
Nikolsk, Penza Province, Russia, circa 1815
Glass, gold, paper, straw, wood, moss, lichen, adhesive, paint
Museum purchase, 2003 ([23.500](#))



Four tumblers
Russia, 1800s
Glass
([23.46](#); [23.247](#); [23.47](#); [23.480](#))





Goblet with lid
Russia, 1800s
Glass
([23.104.1-2](#))



Vase from a pair
Russia, early 1900s
Glass
([23.25.1](#))



Vase from a pair
Imperial Porcelain and Glass Manufactories (Russian, 1744–1917)
Petr Ivanovich Krasnovsky, designer (Russian, 1871–?)
Grigory Omrokov, engraver (Russian, active in the late 1800s–early 1900s)
St. Petersburg, 1911
Glass
([23.128.1](#))

FRANCE



Tumbler
France, 1777
Glass
Gift of Eleanor Close Barzin, 1975 ([23.307](#))



Tumbler
France, 1700s
Glass
Gift of Eleanor Close Barzin, 1975 ([23.305](#))



Tumbler engraved with the Nozay family crest
France, 1700s
Glass
Gift of Eleanor Close Barzin, 1975 ([23.306](#))



Pair of vases
Baccarat Glassworks (French, 1764–present)
Baccarat, France, early 1900s/mid-1900s Glass
([23.434.1-2](#))



Pair of vases
France, 1900s Glass
([23.427.1-6](#))



Bowl with cover
Grachev Brothers, silversmith (Russian, 1848–1917): silver mounts
St. Petersburg, 1900–17: silver mounts
Probably Baccarat Glassworks (French, 1764–present): bowl
Baccarat, France, early 1900s: bowl
Glass, silver
Gift of Mrs. Peter M. Rouzitsky, 1977 ([23.199.1-2](#))

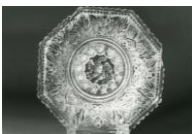
UNITED STATES



Sugar bowl
United States, second half of the 1800s
Glass
([23.170.1-2](#))



Mustard pot with spoon
United States, 1840–60
Glass
([23.190.1-3](#))



Dish
Boston and Sandwich Glass Company (American, 1826–88)
Sandwich, Massachusetts, 1827–40
Glass
(23.140)



Dish
Boston and Sandwich Glass Company (American, 1826–88)
Sandwich, Massachusetts, 1800s
Glass
([23.169](#))



Plate
Boston and Sandwich Glass Company (American, 1826–88)
Sandwich, Massachusetts, 1827–40
Glass
([23.137.1](#))



Bowl with cover
Adams and Company (American, 1861–91)
Pittsburgh, 1888
Glass
([23.153.1-2](#))



Plate
United States, 1860-80
Glass
([23.201.3](#))



Pitcher
Richards and Hartley (American, 1866–94)
Tarentum, Pennsylvania, before 1870
Glass
([23.159](#))



Alphabet plate
United States, 1800s
Glass
([23.157.1](#))



Plate
United States, 1800s
Glass
([23.173.1](#))



Plate
United States, 1900s
Glass
([23.174](#))

Section 4: Glass and Furnishings



Radiaver (electric glass radiator and towel warmer)
Saint-Gobain Manufactory (French, 1665–present)
René-André Coulon, designer (French, 1908–97)
Saint-Gobain, France, 1937–52
Glass, metal, nickel
([2015.9](#))



Candelabra
Harrach Glassworks (Bohemian, 1712–present)
Harrachov, Bohemia, now Czech Republic, 1929
Glass, metal
([14.215](#))



Desk
Attributed to the workshop of Heinrich Daniel Gambs (German, active in Russia, 1765–1831)
St. Petersburg, late 1790s
Wood, brass, verre églomisé
Gift of Dina Merrill Robertson, 1980 ([32.26](#))



Pair of candleholders
Moscow, circa 1840
Glass, gilt bronze
Gift of Madame Augusto Rosso, 1966 ([14.245.1-2](#))



Footed bowl
Baccarat Glassworks (French, 1764–present)
Baccarat, France, circa 1860
Glass
([23.413.2](#); [23.431](#))



Table
Attributed to the workshop of Heinrich Daniel Gambs (German, active in Russia, 1765–1831) and Jonathan Ott (Austrian, active in Russia, circa 1800)
St. Petersburg, circa 1800
Mahogany, pine, glass, gilt metal
Museum purchase, 2004 ([32.31](#))

Section 5: Rooted in Nature



Covered cup
Russia, 1790–1810
Glass
Gift of Anna Antik in memory of Marie Antik,
1976 ([23.254.1-2](#))



Perfume bottle
Russia, mid-1800s
Glass
([23.82.1-2](#))



Decanter
Russia, circa 1840
Glass
([23.81.1-2](#))



Two wine glasses
Russia, second half of the 1800s
Glass
Gift of Madame Augusto Rosso, 1968
([23.472.1-2](#))



Decanter
Russia, 1840–70
Glass
([23.79.1-2](#))



Paperweight
United States, 1900s
Glass
([23.185](#))



Two ink bottles
Possibly Whitefriars Glassworks (British,
1834–1980)
Great Britain, circa 1860
Glass
([23.187.1-2](#); [23.186.1-2](#))





Perfume bottle
United States, 1900s
Glass
([23.188.1-2](#))



Two snuff bottles
Beijing, 1800s
Glass, jade, metal
([61.55](#); [61.54](#))



Vase
Émile Gallé (1846–1904)
Nancy, France, early 1900s
Glass
([23.191](#))



Pair of vases
Imperial Glass Manufactory (Russian, 1777–
1917)
St. Petersburg, 1914
Glass
([23.208.1-2](#))

Section 6: At the Table FORMAL SETTINGS



Wine set (decanter and two glasses)
Russia, circa 1830
Glass
Gift of Madame Augusto Rosso, 1968
([23.463.1-4](#))



Pieces from a glassware service
Russia, 1800s
Glass
Gift of Madame Augusto Rosso, 1968
([23.465-471](#))



1. CHAMPAGNE



Four champagne flutes
Russia, 1800s
Glass
([23.41.2](#), [23.89.1](#), [23.214](#), [23.99](#))



Champagne flute with engraved monogram
of Emperor Nicholas II
St. Petersburg, 1894-1917
Glass
([23.110.1](#))



Two champagne coupes
1900s
Glass
Gift of Eleanor Close Barzin, 1975
([23.367.1](#)); Gift of Mrs. Augustus Riggs
([23.278.1](#))



2. WATER



Water glass
Russia, 1800s
Glass
Gift of Madame Augusto Rosso, 1968
([23.466.2](#))



Two tumblers
Russia, 1800s
Glass
([23.75](#); [23.76.1](#))



3. WINE



Decanter
Europe, 1700s
Glass
Gift of Eleanor Close Barzin, 1975
([23.344.1-2](#))



Three tumblers
France, 1700s
Glass
Gift of Eleanor Close Barzin, 1975 ([23.301-303](#))



Four goblets
Russia, 1800s
Glass
([23.90](#); [23.91](#); [23.92](#); [23.233](#))





4. LIQUEUR AND COCKTAILS



Decanter and two liqueur glasses
Russia, 1800–49
Glass
([23.86.1–2](#); [23.87.1–2](#))



Cocktail glasses from Marjorie Post's rooster and fish sets
United States, 1900s
Glass, enamel
Gift of Mrs. Augustus Riggs, 1975 ([23.268.1](#); F1997.5)



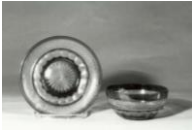
Cocktail glasses
United States, 1800s
Glass
Gift of Mrs. Augustus Riggs, 1975 ([23.276.1](#); [23.277.1](#))



5. BOWLS



Two finger bowls and tumblers engraved with the monogram of Grand Duke Nicholas Mikhailovich of Russia (1859–1919)
Russia, mid to late 1800s
Glass
Gift of Madame Augusto Rosso, 1968
([23.453.1-2](#); [23.454.1-2](#))



Finger bowl and saucer
1900s
Glass
([23.424](#))

POST FAMILY GLASSWARE SETS



6. Pieces from the C.W. Post glassware service
Probably Western Europe, circa 1900
Glass, gilding
Gift of Eleanor Close Barzin, 1975 ([23.364-372](#))



7. Pieces from Marjorie Post's rococo revival glassware service
Probably Western Europe, late 1800s
Glass, gilding
Gift of Mrs. Augustus Riggs, 1975
([23.263-265](#))



8. Pieces from Marjorie Post's red glassware service
Probably Western Europe, 1900s
Glass
(TL2018.4.1-49)



9. Pieces from Marjorie Post's red glassware service
United States, 1900s
Glass
Gift of Mrs. Augustus Riggs, 1975
([23.278-282](#))



10. Pieces from the Sea Cloud glassware service
T.G. Hawkes and Company (American, 1880–1959)
Corning, New York, 1935
Glass
([23.481.1](#); [23.481.3](#); [23.481.5–7](#))



11. Pieces from a glassware service with hunting scenes
Harrach Glassworks (Bohemian, 1712–present) Harrachov, Bohemia, now Czech Republic, 1929
Glass
Gift of Mrs. Augustus Riggs, 1973 ([23.255–262](#))



12. Pieces from Marjorie Post's Renaissance revival glassware service for Mar-A-Lago
Attributed to Salviati & Co. (Italian, 1859–present)
Venice, circa 1927
Glass
Gift of Dina Merrill Robertson, 1975
([23.392–397](#))



13. Pieces from Marjorie Post's purple glassware service
United States, 1900s
Glass
Gift of Dina Merrill Robertson, 1975
([23.487.1](#); [23.398–406](#))



14. Pieces from Marjorie Post's green glassware service
T.G. Hawkes and Company (American, 1880–1959)
Corning, New York, 1934
Glass
([23.483](#); [2010.21](#))



15. Pieces from Marjorie Post's black and white glassware service for her New York apartment
Attributed to Salviati & Co., (Italian, 1859–present)
Venice, circa 1927
Glass
Bequest of Dina Merrill Hartley, 2018
([2018.40.2](#))





16. Pieces from Marjorie Post's yellow glassware service
Attributed to Salviati & Co., (Italian, 1859–present)
Venice, 1900s
Glass
Gift of Dina Merrill Robertson, 1975
([23.387-391](#))

RUSSIAN IMPERIAL TABLE SETTINGS



17. Goblet from a service for Empress Elizabeth (r. 1741–61)
St. Petersburg glassworks
St. Petersburg, 1743–61
Glass
([23.123.7](#))



18. Pieces from the banquet service for the Romanovs
Imperial Glass Manufactory (Russian, 1777–1917)
St. Petersburg, after 1824
Glass, enameled gold foil
([23.116.1-4](#); 23.120–126)





19. Pieces from a service for the countryside imperial residences
Imperial Glass Manufactory (Russian, 1777–1917) Ivan Alekseevich Ivanov, designer (Russian, 1779–1848)
St. Petersburg, after 1823
Glass
([23.58–65](#))



20. Pieces from the cottage service for the Peterhof imperial countryside residence
Imperial Glass Manufactory (Russian, 1777–1917)

St. Petersburg, after 1829
Glass, enamel, gilding
([23.50–53](#); [23.55](#); [23.57](#))



21. Decanter from the Derzhava (imperial yacht) service
Imperial Glass Manufactory (Russian, 1777–1917)

Ippolit Antonovich Monigetti, designer
(Russian, 1819–78)
St. Petersburg, 1871–73
Glass
Museum purchase, 1988 ([23.479.1–2](#))



22. Pieces from the service celebrating the Romanov tercentenary, 1913
Imperial Glass Manufactory (Russian, 1777–1917)

Lavr Orlovsky, engraver (Russian, active 1898–1917)
St. Petersburg, 1912–17
Glass
([23.129.1](#); [23.129.4](#))



Three candleholders
St. Petersburg, circa 1840
Glass, gilt bronze, marble
Gift of Madame Augusto Rosso, 1970
([14.247](#)); Gift of Madame Augusto Rosso,
1968 ([14.246.1–2](#))





Pair of candelabras
St. Petersburg, circa 1800
Glass, gilt bronze, marble
Gift of Madame Augusto Rosso, 1968
([14.241.1-2](#))



Pieces from Grand Duchess Olga
Nikolaevna's Service
Imperial Glass Manufactory (Russian, 1777–
1917)
St. Petersburg, circa 1846
Glass, silver
Museum purchase, 2008 ([2008.9.1-2](#));
Anonymous Lender



Still life
William Hughes, painter (British, 1842–1901)
Great Britain, 1879
Oil on canvas
Gift of General Foods, 1978 ([51.189](#))



Fruit and still life
Edward Ladell, painter (British, 1821–86)
Great Britain, 1800s
Oil on canvas
Gift of General Foods, 1978 ([51.195](#))



Fruit and still life
Edward Ladell, painter (British, 1821–86)
Great Britain, 1800s
Oil on canvas
Gift of General Foods, 1978 ([51.200](#))

CELEBRATE, COMMEMORATE, TOAST



Goblet
Attributed to the Imperial Glass Manufactory
(Russian, 1777–1917)
Russia, 1800–1833 Glass
([23.35](#))



Tumbler with unidentified coat of arms
Probably France, 1700s
Glass
Gift of Eleanor Close Barzin, 1975 ([23.304](#))



Green wine glass with monogram
Attributed to the Imperial Glass Manufactory
(Russian, 1777–1917)
St. Petersburg, 1777–96
Glass, silver
([23.17](#))



Goblet with the Koslov family's coat of arms
Probably Russia, 1870–90
Glass
([23.482](#))



Goblet with the Golitsyn family's coat of arms
Imperial Glass Manufactory (Russian, 1777–1917)
St. Petersburg, 1800s
Glass
([23.127](#))



Goblet with the Kolokoltsov family's coat of arms
Maltsov Glassworks (Russian, 1756–present)
Dyatkovo, Russia, 1860–70
Glass, enameled gold foil
([23.37](#))



Champagne flute with the Meller-Zakomelsky family's coat of arms
St. Petersburg, 1810–40
Glass, enamel
([23.32.1](#))



Goblet with Poland's coat of arms
Probably Poland, 1800s
Glass
([23.231](#))



Covered tumbler with portrait of Emperor
Alexander I of Russia
St. Petersburg, 1814–20
Glass
([23.246.1-2](#))



Mug with portrait of Empress Elizabeth
Alexeievna of Russia
St. Petersburg, 1814–30
Glass, gilding, enamel
(23.240)



Decanter and liqueur glass with portrait of
Emperor Nicholas I of Russia
Attributed to the Imperial Glass Manufactory
(Russian, 1777–1917)
St. Petersburg, 1840
Glass
([23.198.1-3](#))



Tumbler with portrait of Prince Frederick of
the Netherlands
Attributed to Baccarat Glassworks (French,
1764–present)
Baccarat, France, 1830–35
Glass
([23.29](#))



Tumbler and goblet with portrait of Empress
Alexandra Feodorovna of Russia
Attributed to the Imperial Glass Manufactory
(Russian, 1777–1917)
St. Petersburg, 1840–50
Glass
([23.43](#); [23.36](#))





Tumbler with portrait of a Shchulepnikov family member
Russia, 1800s
Glass
([23.250](#))



Plate with portrait of President George Washington
Boston & Sandwich Glass Company
(American, 1826–88)
Sandwich, Massachusetts, 1827–40
Glass
([23.141](#))



Plate with portrait of President Ulysses S. Grant
Adams and Company (American, 1861–91)
Pittsburgh, 1885
Glass
Gift of Mrs. Augustus Riggs, 1975
([23.270](#))



Plate with portrait of President James Garfield
United States, 1880s
Glass
([23.149](#))



Dessert plate commemorating the liberation of Berlin, 1813
Imperial Glass Manufactory (Russian, 1777–1917)
Fedor Petrovich Tolstoï, designer (Russian, 1783–1873)
St. Petersburg, 1836–40
Glass, yellow silver chloride stain
([23.206](#))



Covered jam jar
Russia, 1814
Glass, gilt metal
([23.234.1-2](#))



Liqueur bottle, champagne flute, and tumbler
Attributed to Bakhmetev Glassworks
(Russian, 1764–Present)
St. Petersburg, 1814–30
Glass
([23.209.1-2](#); [23.215](#); [23.243](#))



Goblet with lid
Attributed to the Imperial Glass Manufactory
(Russian, 1777–1917)
St. Petersburg, 1814–30
Glass
([23.21.1-2](#))

Small plate with representation of the Bunker
Hill Monument
Boston and Sandwich Glass Company
(American, 1826–88)
Sandwich, Massachusetts, circa 1840
Glass
([23.139](#))

Commemorative champagne coupe of the
French-Russian Alliance, 1891–94
Daum (French, 1878–present)
Nancy, France, 1893
Glass
Museum purchase, 2001 ([23.499](#))

Commemorative tumbler for the 1896
coronation of Emperor Nicholas II of Russia
Daum (French, 1878–present)
Nancy, France, 1896
Glass
([23.111](#))



Commemorative tumbler for the visit of
Nicholas II of Russia to France
France, 1896
Glass
([23.112](#))

Section 7: More Light!



Chandelier
Russia, circa 1790
Glass, gilt bronze
([14.9](#))



Pair of candelabras
Baccarat Glassworks (French, 1764–present)
Baccarat, France, late 1800s/early 1900s
Glass, metal
([14.221.1-2](#))

Photo Credit: Dave Fridberg



Pair of candelabras
Late 1800s–1900s
Glass
Gift of Dina Merrill Robertson, 1975
([23.386.1-2](#))



Pair of candelabras
England, circa 1820
Glass, gilt bronze
([14.218.1-2](#))



Pair of candelabras
England, circa 1820
Glass, gilt bronze
([14.217.1-2](#))



Pair of candelabras
Russia, circa 1820
Glass, gilt bronze
Gift of Madame Augusto Rosso, 1968
([14.242.1-2](#))



Pair of candelabras
England, circa 1820
Glass, gilt bronze
([14.220.1-2](#))



Pair of candelabras
1800s
Glass
Gift of Mrs. Augustus Riggs, 1975
([23.266.1-2](#))



Pair of candelabras
England, circa 1820
Glass, gilt bronze
([14.216.1-2](#))

Section 8: Is That Glass?



Box
England, late 1600s
Wood, beads, brocade, paper
([34.51](#))

IMITATING GEMSTONES



Medallion with God the Father and the Holy Ghost
Moscow, 1800s
Enamel, silver, paste stones
(15.16)



Bishop's pectoral cross and chain
Grigory Pankratev, jeweler (Russian, active 1874–1908)
Russia, late 1800s or early 1900s
Silver, enamel, glass paste
(12.120)



Clock with figure of a scissors-grinder
London, 1800s
Enamel, silver, paste jewels
(16.28)



Busts of Emperor Franz Joseph and Empress Elizabeth of Austria
Attributed to Harrach Glassworks (Bohemian, 1712–present)
Harrachov, Bohemia, now Czech Republic, circa 1879
Glass
(23.130.1-2)



Empress Catherine II of Russia as Minerva
Attributed to the Imperial Glass Manufactory (Russian, 1777–1917)
Maria Feodorovna, designer (Russian, 1759–1828)
St. Petersburg, late 1700s
Glass paste
(23.27)



Round box
Charles-Raymond Granchez, Au Petit Dunkerque proprietor and luxury merchant (French, active in Paris, late 1700s)
Paris, late 1700s
Gold, verre églomisé, silver
(11.17.1-2)



Emperor Paul I of Russia in profile
Attributed to the Imperial Glass Manufactory
(Russian, 1777–1917)
Maria Feodorovna, designer (Russian, 1759–
1828)
St. Petersburg, late 1700s
Glass paste, silver
([23.28](#))



Afternoon or evening dress
New York, 1947–50
Silk taffeta, beads
(48.100)



Pair of women's evening shoes
Frank Brothers (American, active 1910s–40s)
New York
Silk satin, metal, rhinestones (paste), leather,
wood
([49.90.1-2](#))



Afternoon or evening dress with jacket
Béla Ross, Inc., of Oldric Royce, Inc.,
designer (New York, active 1941–65)
New York, 1959-62
Raw silk satin, silk acetate, glass beads,
plastic beads, fur
([48.124.1-2](#))