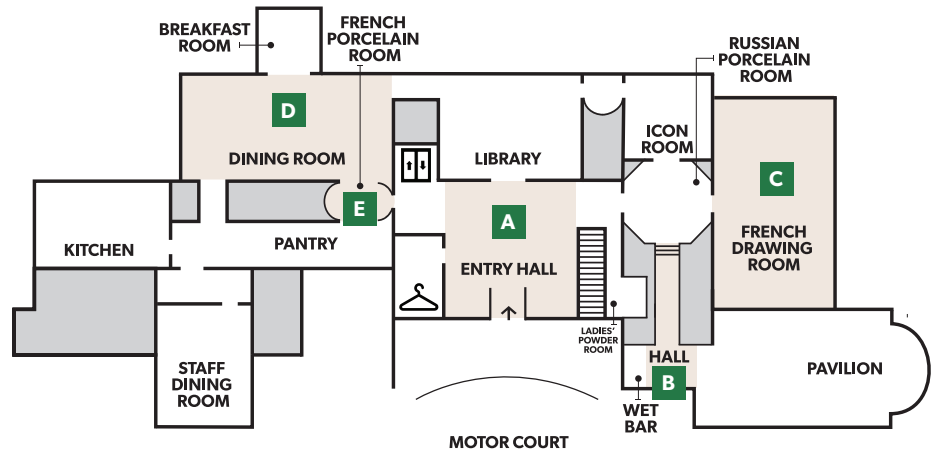


French Art

- 1 GO to the rooms shaded in gold on the map.
- 2 USE the close-ups to find the art in each room.
- 3 READ to learn more.



A ENTRY HALL

A cabinetmaker fit pieces of colored wood together like a puzzle to make it look like a basket of flowers.

Q What other pictures do you see on this chest of drawers?

Chest of Drawers (Commode), attributed to Jean-Henri Riesener, Paris, about 1775, wood marquetry, gilt bronze, marble (33.11)

🎧 311



A ENTRY HALL

A stork drinks from a tall bottle with its beak, while a thirsty fox, whose snout can't fit into the bottle, watches. This scene is from a fable called "The Fox and the Stork." A fable is a story that teaches a lesson.

Armchair, Paris, 1600s, walnut, tapestry (31.70)



B HALL TO PAVILION

An artist named Pauline Knip painted this bird. She studied real birds at a natural history museum so she could make her paintings as accurate as possible.

Q What colors are the birds on the nearby dishes?

Plate from the South American Birds Service, Sèvres Porcelain Manufactory, Pauline Knip, painter, J.F.C. Leloi, border designer, Sèvres, France, 1819-20, porcelain (24.136.4)

🎧 341

Q MANSION TREASURE HUNT: French Art



C FRENCH DRAWING ROOM

These children are playing a game of spinning an arrow to win cookies. Nearby a traveling salesman, wearing a turban, sells his products.

Q *What else is happening in this scene?*

Tapestry, Beauvais Tapestry Manufactory, François Boucher, designer, Beauvais, France, 1736, wool, silk (41.1)

🔊 321



C FRENCH DRAWING ROOM

Empress Eugénie, who lived a long time ago in France, wears a fancy straw hat. This type of hat is called a bergère (pronounced bare-zhair), the French word for shepherdess.

Portrait of Empress Eugénie, Franz Xaver Winterhalter, France, 1857, oil on canvas (51.11)

🔊 322



D DINING ROOM

This paneling was originally on the walls of an old house in Paris. Notice the birds, flowers, and shells carved in the wood.

Paneling, Paris, about 1730, oak (34.62)



D DINING ROOM

This metal lion decorates an andiron (pronounced and-iron). Pairs of andirons are used to hold wood in fireplaces.

Q *What other animals can you find on art in the mansion?*

Andiron, Paris, about 1750, gilt bronze (14.4.1)

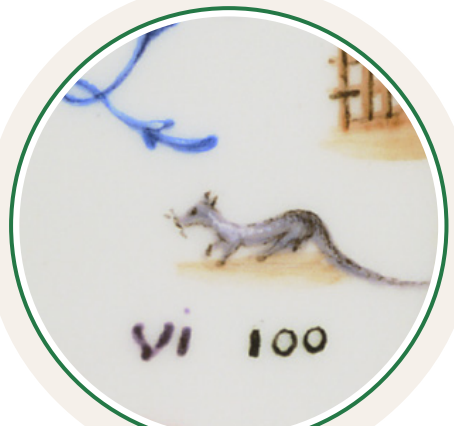


E FRENCH PORCELAIN ROOM

People used to put ice in the lid and in the bottom of fancy pails like this to keep fruit and ice cream cool at big feasts.

Ice Pail, Sèvres Porcelain Manufactory, Sèvres, France, 1700s–1800s, porcelain (24.3.1–3)

🔊 421



E FRENCH PORCELAIN ROOM

This rat is part of a rebus—a puzzle that uses pictures and symbols to make words. The rat helps form the French word for “delightful.” People still use pictures and symbols to send messages—emojis, for example!

Cup, Sèvres Porcelain Manufactory, Sèvres, France, 1778, porcelain (24.127.3)

🔊 423